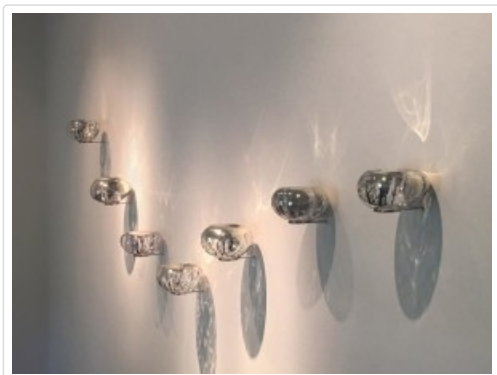


DAU 102

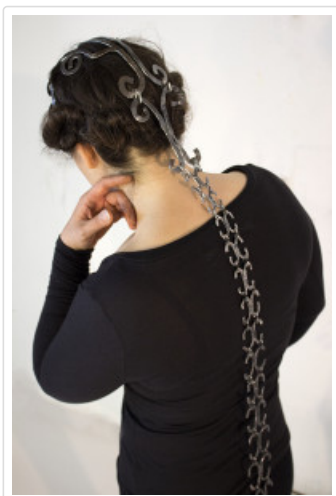
In Main Gallery

Suzy Sureck: After Glow

Drawing spatially with light, the multi-media works in *AfterGLOW* merge aerial views of rivers, branching systems of the human body, and microscopic images of plant cells. Biodiversity and the interdependence of the body with the environment are seen through a variety of materials including ink, vellum, glass, silver, stainless steel and video. Suzy Sureck's sculptural installations, drawings, videos and photographs involve the physical and metaphoric qualities of reflection and shadow, and the poetics of luminosity. In awe of earth's inherent beauty and value, its complexities and cycles, her works applaud the richness and interdependence of our diverse world.

www.suzysureck.com

In the Beacon Room

Rosary Solimanto: Armor of Adaptation

Armor of Adaptation is a full-bodied wearable kinetic metal sculpture which embodies and strengthens the identity of Solimanto as an intersectional "disABLEd" woman. This piece is uniquely tailored to Solimanto's health conditions, surgeries, and diseases (from multiple sclerosis, endometriosis, hypothyroid, arthritis, to a bone marrow transplant among eight other surgeries).

Armor of Adaptation is constructed from forged steel interlocking into shapes, which is displayed in a suspended installation form. The sculptural work accompanies large format photographs of the piece worn in performative poses related to Solimanto's health conditions, all of which are invisible afflictions. As 80% of people with disabilities brave invisible impairments, these conditions are the most stigmatized, as they are not seen, but only experienced. The goal of Solimanto's work is to advocate disability pride and awareness to women with health conditions in order to imbue their condition with fascination and empowerment.

www.rosarysolimanto.com

July 9th, 2018 | Category: [Archive](#)

« [bau 163](#)

[Bau 161](#) »